

## **ANTI-ENCROCHMENT OPERATION - GULBERG**

An Anti encroachment operation has been carried out under the supervision of Chief Town planner-I to remove any kind of temporary/permanent fixtures/barriers that are being fixed on parking spaces against prevailing Building and Zoning regulations. Action has been taken against number of multi storey building and commercial plazas.

Action has been taken against following buildings.

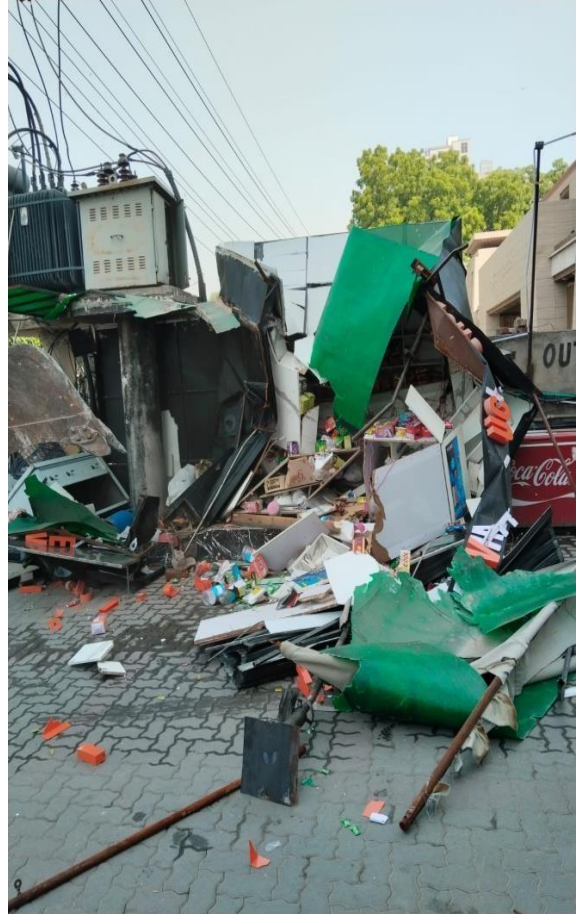
### **1. Pace Tower - Gulberg**



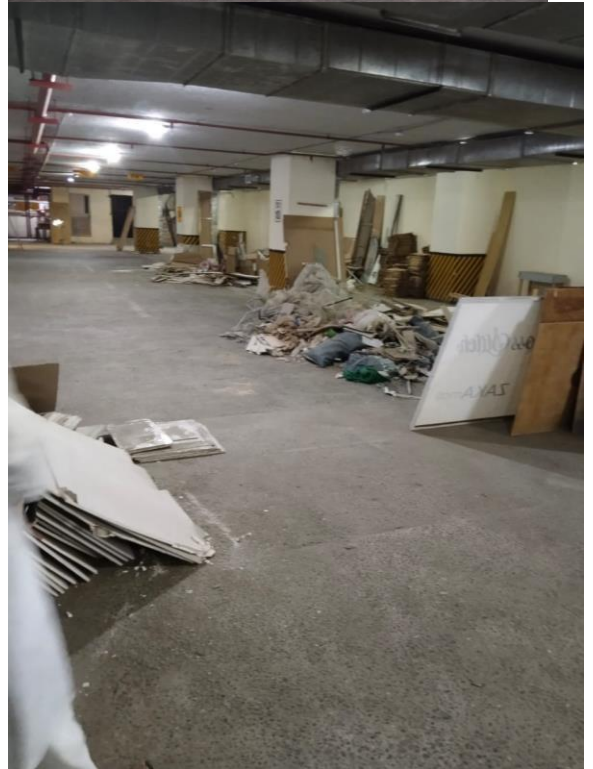
### **2. Sadique Trade Centre - Gulberg**



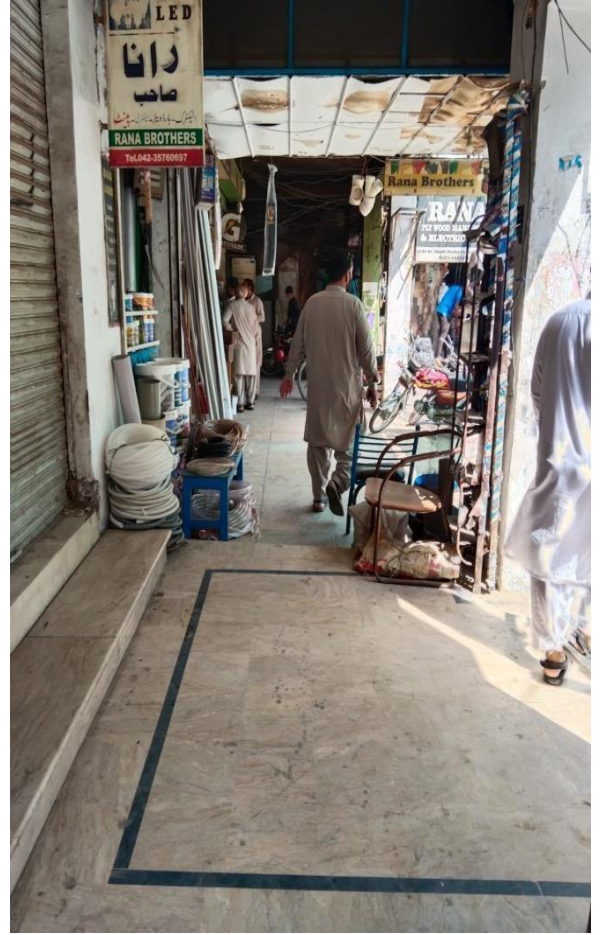
**3. Lahore Centre Main Boulevard Gulberg**



**4. Xinhua Mall - Gulberg**



5. Galib Market Roundabout - Gulberg



6. Hotel One - Gulberg

